



BRACKET TEST RESULTS



STANDARD	LOAD TO DEFORMATION (LBF)
5 X 8"	1520 / PR
8 X 12"	2920 / PR
12 X 12"	1700 / PR
12 X 18"	2040 / PR
15 X 15"	1600 / PR
15 X 21"	1780 / PR
18 X 18"	1750 / PR
18 X 24"	2220 / PR
21 X 21"	1905 / PR
24 X 24"	2560 / PR
24 X 29"	2100 / PR
29 X 35"	1550 / PR



CONCEALED (2.0)	LOAD TO DEFORMATION (LBF)
EC9	7960 / PR
EC12	3100 / PR
EC15	2235 / PR
EC18	2950 / PR
EC21	1665 / PR
EC24	2320 / PR
EC30	1375 / PR
C9	4520 / PR
C12	2500 / PR
C15	2170 / PR
C18	2060 / PR
C21	1660 / PR
C24	1830 / PR
C30	1000 / PR



HYBRID(1.5)	LOAD TO DEFORMATION (LBF)
HYB(1.5)9	2500 / PR
HYB(1.5)12	2220 / PR
HYB(1.5)15	1635 / PR
HYB(1.5)18	1300 / PR
HYB(1.5)21	1165 / PR
HYB(1.5)24	1050 / PR



HYBRID(1.0)	LOAD TO DEFORMATION (LBF)
HYB(1.0)9	1100 / PR
HYB(1.0)12	1000 / PR
HYB(1.0)15	900 / PR
HYB(1.0)18	800 / PR
HYB(1.0)21	675 / PR
HYB(1.0)24	525 / PR



STAINLESS STEEL	LOAD TO DEFORMATION (LBF)
8 X 12"	1450 / PR
15 X 21"	1140 / PR
18 X 24"	1020 / PR



ALUMINUM	LOAD TO DEFORMATION (LBF)
8 X 12"	1700 / PR
15 X 21"	1800 / PR
18 X 24"	1200 / PR
24 X 29"	2200 / PR

NOTE: Load test limits are based on the structural integrity of the bracket itself. Installation method and the material the brackets are attached to will affect the actual limits.

A&M HARDWARE, INC.

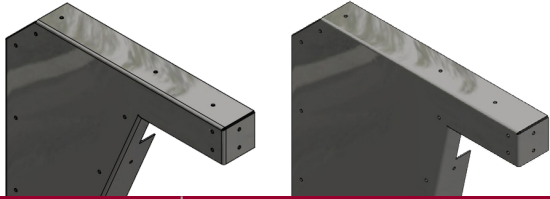
Call To Order (888) 647-0200

1165 Strickler Road, Mount Joy, PA 17552 | Fax: (717) 653-5874

www.AandMhardware.com



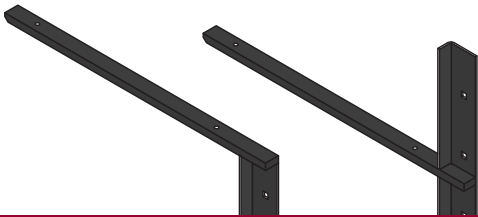
BRACKET TEST RESULTS



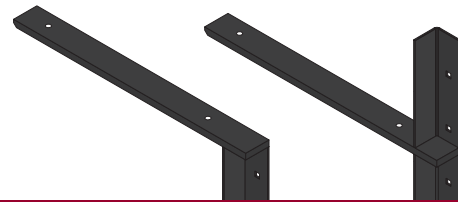
ADA VANITY	LOAD TO DEFORMATION (LBF)
ADA (21") STEEL	1560 / PR
ADA (21") SS	860 / PR
ADA (21") AL	1440 / PR
ADA (23") STEEL	1640 / PR
ADA (23") SS	940 / PR
ADA (23") AL	1900 / PR



CONCEALED (1.0)	LOAD TO DEFORMATION (LBF)
EC9 (1.0)	760 / PR
EC12 (1.0)	650 / PR
EC15(1.0)	500 / PR
EC18 (1.0)	400 / PR
C9 (1.0)	700 / PR
C12 (1.0)	635 / PR
C15(1.0)	375 / PR
C18 (1.0)	350 / PR



1.0" CONCEALED FLAT	LOAD TO DEFORMATION (LBF)
CFLAT9(1.0)	1900 / PR
CFLAT12(1.0)	1600 / PR
CFLAT15(1.0)	1025 / PR
CFLAT18(1.0)	1100 /PR
ECFLAT9(1.0)	3400 / PR
ECFLAT12(1.0)	2100 / PR
ECFLAT15(1.0)	1210 / PR
ECFLAT18(1.0)	1400 / PR



2.0" CONCEALED FLAT	LOAD TO DEFORMATION (LBF)
CFLAT9(2.0)	2550 / PR
CFLAT12(2.0)	2000 / PR
CFLAT15(2.0)	1625 / PR
CFLAT18(2.0)	1470 / PR
CFLAT21(2.0)	1030 / PR
CFLAT24(2.0)	1150 / PR
ECFLAT9(2.0)	4900 / PR
ECFLAT12(2.0)	3450 / PR
ECFLAT15(2.0)	2850 / PR
ECFLAT18(2.0)	2400/ PR
ECFLAT21(2.0)	2050 / PR
ECFLAT24(2.0)	1700 / PR

NOTE: Load test limits are based on the structural integrity of the bracket itself. Installation method and the material the brackets are attached to will affect the actual limits.

A&M HARDWARE, INC.

Call To Order (888) 647-0200

1165 Strickler Road, Mount Joy, PA 17552 | Fax: (717) 653-5874

www.AandMhardware.com